



Newsletter 5 - BdP national Jamboree

Dear international guest,

the BdP jamboree is coming closer and closer!

We are all getting prepared to start this adventure together.

In this newsletter we want to summarize all the topics we talked about in our video call and want to give you some more last information.

Also check again all the points from the previous newsletters to make sure you didn't forget or oversee anything.

The team

- Steffi: Team Leader and communication (e-mails, newsletters, video calls)
- dschaggs: Team Leader and communication
- Svenja: communication Israel
- Finn: communication
- Rachel: communication, guidance ISTs, guidance ULBIs
- Jojo: guidance ULBIs
- Adina: guidance ISTs
- Eva: guidance ISTs, guidance Ukrainian participants
- Nemo: guidance Ukrainian participants
- Claudia: translations, guidance French participants
- Alex, Mone: International Center
- Damaris, Knoppers, Maren, Wiesel, Schnulli, Schlaubi, Laura: Support International Evening
- Sandra: support

The Team



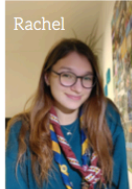
Steffi



Finn



dschaggs



Rachel



Svenja



Jojo

Additional:

Adina, Eva, Alex, Knoppers, Maren, Damaris, Claudia, Mone, Sandra, June & Nemo.

Newsletters and Information

Our Camp – 29th July to 8th August in Königsdorf

Address: Jugendsiedlung Hochland, Rothmühle 1, 82549 Königsdorf

Attention there is another BULA from VCP with nearly the same dates!



Arrival and departure

If you didn't book a coach or shuttlebus until now you have to use the public transportation from trainstation Wolfratshausen.

BUS nb. 379, Bus Stop: Aug, Wackersberg, Direction Bad Tölz

Insurance

Everyone who didn't send us the healthinsurance till now will get an healthinsurance from us.

Everyone will get a liability insurance over the BdP. You will get a invoice over your german partnergroup.

Corona Update

If possible, please bring an antigen test from a testing centre that is not older than 24 hours when you arrive at the campsite. If this is not possible with your departure, please bring a self-test for your arrival day and test all of you on arrival at the campsite.

All those who have been vaccinated at least twice, please bring 2 self-tests to be administered throughout the camp. All participants who are not fully vaccinated please bring 10 self-tests - one for each day - and carry them out independently.

Should a participant have a positive corona test, he or she must spend at least one day in our corona quarantine camp.

If the test is negative the next day, the participant is allowed to rejoin his or her group. If the test is still positive the next day, the participant has to stay in the quarantine camp for at least 5 days and is allowed to rejoin his or her group after the 5 days with a negative test.

During the quarantine, one of your group leaders is responsible for the care of the participant. Participants who have tested positive can also be picked up at the camp by their parents (as far as this is possible).

BdP Bundeslager

The BdP

- 13.000 active members, app. 5.000 participants in the Bundeslager, of that app. 500 international guests
- Interconfessional: Our programme does not include religious but often spiritual elements.
- Coeducative: Usually our groups are gender mixed.
- Everybody is welcome no matter their origin, sexuality, gender, religious beliefs, ...
- Grassroots democracy and youth-led organisation: In the BdP young people often start leading with 14 or 15 years. You will not find many people above 30 on the camp.

The camp

Because the space we are on is relatively large, the camp is divided into different areas for a better overview and coordination.

Our various working groups and information centers are represented in the marketplace.

You will find the international team in the "international center", which also serves as a contact point for you. The sections where our local groups, participants and you as our international guests are staying are so-called "sub camps" which are ruled by our federal states and have different topics - ask your partner group about it if they have not told you anything about this yet.

You will have a spot where you can build up your tents next to your partner group - remember to talk to your partner group if they are providing you with tents or if you have to bring your own.



Logistics and Money

There is a supermarket at the campsite. This supermarket is only for the group leaders who cook for their troops. You will have a card with which you can pay at the supermarket. You will share one card with your host group. There will be a budget on the card of 55€ per participant. The budget is included in your participant fee. If you need more than this budget you have to pay extra. But usually this is an adequate amount of budget.

Next to the supermarket, which is only for the group leaders, there will be Cafés. There everybody can buy snacks and soft drinks. There will also be a small Souvenir/outdoor shop and a post office where you can buy post cards. Please keep in mind, that those spendings are private and excluded from the participant fees.

You have to bring cash because you won't be able to pay with card.

There are also sanitary facilities, which are constant standing houses with toilettes and cabin showers. But there are also mobile toilettes and set up washing tents to cover the demand. The washing tents are like big rooms with a row of sinks for washing and teeth brushing. For showering and more privacy you have the cabin showers.

Last but not least there is a first aid tent with doctors and paramedics and also a camp fire brigade at the campsite.

Sleeping:

Since we are all sleeping in tents, a sleeping mat and a warm sleeping bag are necessary for everybody! Please keep in mind that our tents have no floors, so you might want to bring a floor tarp or cover to put underneath your sleeping mats! Usually, we are sleeping in gender mixed tents (participants and leader) – talk to your partner group about it if this is something that is not common in your organization so that in doubt they can organize an extra tent for you. If you bring your own tents anyways, this is not relevant for your group.

Food:

You will cook your food together with your partner group every day, each group has a cooking tent with fire or gas cookers (make sure that it is clear who is bringing the needed kitchen material - you or your German partner group?). Our tradition is to eat on the floor in a circle (in a big tent or outside), so please do not expect sitting on a chair at a table. If you are not comfortable sitting directly on the floor, it is quite common to sit on sleeping mats in the circle. Another thing which is quite important to mention is that our camp is fully vegetarian so there will be no meat offered to buy in the supermarket or cafes.

Traditions:

Our organization is very traditional and keeping and actively living those traditions is important to us. One of the most famous BdP-like thing to do is singing old, self-written traditional guiding and scouting songs around big campfires in our big tents, called "Jurten" or outside. If you walk around our camp side in the evenings, you will hear singing from different tents wherever you go.

Cafés

Every subcamp has its own café. There are nine cafés in total. Every café offers different things. For example they serve soft drinks, cake, ice-cream or small dishes.

During the evenings the cafés turn into bars. Then they also serve alcoholic drinks, like beer and wine. Only participants older than 16 years are allowed to enter the cafés at those evenings. There will be two evenings when they don't serve any alcohol. During these evenings all participants are allowed to enter the café.

Of course during the daytime also every participant is welcome to visit the cafés at any time, no matter which age.



If you do not want your participants to drink any alcohol make sure to colour the given bracelet from yellow (participants older than 16 years) to blue (participants younger than 16 years). Just keep in mind that the rule for under 16 years old participants apply for those with chanced bracelette-colours, even though they are 16 years old or older.

Also, most troops don't drink alcohol on their camp site, but some do.

If you don't want your partner group to drink alcohol on your shared camp site, please talk to them.

Packing list

In the appendix you will find a document with a detailed packing list. The most important points can be found here again.

- warm Sleeping bag and Sleeping mat
- warm clothes for the evening (temperature at night 5-10°C)
- **solid footwear (waterproof)/ hikingboots** (no sandals/ flip flops on the campground)
- rainclothes
- sunhat/ cap, sunscreen, moskitoprotection
- camping plates and dishes
- sanitarybag and towel
- healthcare insurance card, health questionnaire
- instruments, song books
- bring badges and neckerchieves/ scarves if you want to swap with others
- minimum two facemasks (FFP2 or medical masks)



Timetable

	Freitag	Samstag	Sonntag	Montag	Dienstag	Mittwoch	Donnerstag	Freitag	Samstag	Sonntag	Montag
	29.07.2022	30.07.2022	31.07.2022	01.08.2022	02.08.2022	03.08.2022	04.08.2022	05.08.2022	06.08.2022	07.08.2022	08.08.2022
9:30 - 12:00	Anreise	Aufbau	UL	UL	UL	UL	UL	UL	UL	UL	Abbau & Abreise
12:00 - 14:00			Mittagessen	Mittagessen	Mittagessen	Mittagessen	Mittagessen	Mittagessen	Mittagessen	Mittagessen	
14:00 - 16:00	Aufbau		UL	UL	UL	UL	UL	LV- Nachmittag	UL	UL	
16:00 - 18:00		UL	Bundeszeit	Bundeszeit	Bundeszeit	Bundeszeit	Bundeszeit		Bundeszeit		
		BuLa-Eröffnung									
18:00 - 20:00		Abendessen	Abendessen	Abendessen	Abendessen	Abendessen	Abendessen	Abendessen	Abendessen	Abendessen	
20:00 - 22:00		UL	Pfadiabend in den Cafés	UL	UL	Pfadiabend in den Cafés	Singewettstreit	LV-Abend	Internationaler Abend		
22:30 - 1:00	Café	Café	Café	Café*	Café*	Café alkoholfrei**	Café	LV-Abend im UL-Café	Café	Café	

Explanation:

- Abbau & Abreise = taking down tents and departure
- Abendessen = Dinner
- Anreise = Arrival
- Aufbau = building up tents
- BuLa-Abschluss = Jamboree Closing Ceremony
- BuLa-Eröffnung = Jamboree Opening Ceremony
- Bundeszeit = Jamboree programme at the market square (Marktplatz)
- Café = Cafés serving also alcoholic drinks
- Café alkoholfrei = Café serving only non-alcoholic drinks



- Internationaler Abend = International Evening!!
- LV-Abend = Evening spend with the local groups from the same federal state
- LV-Nachmittag = Afternoon spend with the local groups from the same federal state
- Mittagessen = Lunch
- Pfadiabend in den Cafés = Evening at the Cafés for under 16 y/o
- UL → Unterlager = Subcamp programme at the subcamp campsite
- Singewettstreit = Singing- and Music-Competition

International Reception:

All international group leaders are invited to our International Reception on Sunday, 31st July, 3pm - 4pm in the International Center (on the market square).

Programm at the national Jamboree 2022

We have put together a varied programme with something for everyone!

In addition to the programme in the sub-camps, there are also programme points at the national level, in the so-called "Bundeszeit".

Marketplace

Here you will find the National Committee, the Foundation, our working groups and much more with information, fun and service. The programme is mainly during the "Bundeszeit", but you are welcome all around the clock. The International and Raus! centres as well as the camp newspaper and the Round Room can also be found on the Marketplace.

On the marketplace there are some service points

- the Infojurt for all questions, there you can also send mail and hand in lost property (there is also a lost property box in every subcamp).
- "The workshop with competent people and equipment who will give you technical help and advice if something breaks and you don't know what to do.
- The Raus! centre with activities outside the campsite.

Bundeszeit

During the daily covenant time, walk-ins and workshops are offered by all sub-camps and at the market place. These are different activities in which you can participate alone or in a group and meet people.

Walk-In: Offer can be started or left at any time. The activities can last for different lengths of time. Registration is not necessary.

Workshop: Offer lasts a certain amount of time (at least 1 hour) and takes place in a fixed group. You can secure a place in a workshop by registering in advance at the Infojurte. If there are still places available, you can also attend spontaneously.

The marketplace and the cafés are open from 4 pm. You will find out the starting times of the workshops in the announcements.



RAUS-days (get-out-days)

Each group has two "rest-days" during the camp where they can leave the camp side and explore the surrounding area. You can go hiking or check out the offers in the RAUS-centre (travel agency), where you can book several trips (e.g. trip to the Alps, museums, etc.).

To plan your RAUS days, it is best to talk to your partner group and then go together to the RAUS-centre.

There are special offers for which you have to register in advance. This might be offers which need the permission of parent or legal guardian, a specific number of participants is needed, or which is not for free.

You will get all information about these offers from your partner group, who have access to the booking system of the RAUS-days.

Central events/stage

There are three central events at the BuLa: the opening, the closing and the singing competition.

To ensure that all sub-camps arrive together (and on time) for the opening and closing, everyone meets at their respective sub-camps and moves together from there to the big stage.

Singing competition

In our big singing competition everyone can take part as a group, small group or individual. If you want to sing on stage on Thursday, 04.08.2022, please register at the BuLa until 02.08.2022 in the "Infojurte".

The following categories are available:

Sippen (up to 16 years, up to two group leaders are allowed to sing)

Rounds and singing groups (16+)

scoutgroups, national associations and large groups

Open category (individual artists, special instruments, show)

In the category "Sippen" one song will be presented, in the other categories two songs will be presented.

We have great prizes in store for the winners, so stay tuned.

You will find more information and registration forms at the camp, in the "Infojurte" and in the camp booklet.

The cafes

The cafés of the sub-camps are traditionally the architectural highlights of each Bundeslager and surpass each other with their elaborate constructions, individual decoration, sophisticated program and their varied culinary offer. The cafés are open almost every day and serve cold and warm drinks as well as snacks and specialties from all regions.

On two evenings they are also open from 8 p.m. and offer a program especially for participants under 16 years of age. When the International Evening takes place in the cafés in the sub camps, these become the stage for international cuisine and festivals. In the late evening hours, changing cafés are open to all participants over the age of 16 and offer a diverse program from singing and bands to speed dating and skat tournaments.

The second scout evenings (under 16 years) and the International Evening are followed by non-alcoholic nights in the cafés. On the other evenings, from 10:30 p.m., beer and wine can also be served in the cafés to participants over the age of 16. After the night's rest at 1:00 a.m., there is only a quiet program in the cafés. Closing time is at 2:30 a.m.



Weather and surroundings

The beautiful campsite is located near the bavarian metropole Munich.

During bavarian summertime the temperature deviation during daytime is 15-35°C. At night it get colder down to 5-15°C. There are also different weather phenomenons like a lot of sun shine, (strong) rain, wind and also summerstorms. Please make sure to take enough sunscreen with you as well as windtight clothing.

The river Isar is located right beside the campsite. The Isar is often underestimated, even though it looks not too dangerous it has strong currents under the surface. For your own safety, we kindly remind you again that it is forbidden to swim in the waters. If you like to go swimming during the camp, there is a public swimmingpool in the next city.

Also, the mountains are nearby. Lastly, there is also a forest around the campside.

Ticks and vaccination

Ticks can be found in the meadows and forests of Germany, especially in the summer months.

The tick is a small black, spider-like insect that feeds on the blood of numerous vertebrates. Blood loss is not usually the problem for the host - whether human or animal. However, the tick can be a carrier of pathogens.



Mosquitoes are also native to Germany. However, they transmit fewer diseases.

Unlike mosquitoes, ticks need much more blood. In extreme cases, they cling to their host (animals and humans) for up to 15 days and drink its blood. To do this, they look for a suitable, usually warm, narrow spot on their victim's body. In humans, they often bite into the armpit or the genital area. Blood makes the tick grow. The tick is very small at first, about 1mm, and can grow up to 12mm by sucking blood.

If the tick is infected with pathogens, a tick bite can be dangerous for humans.

Bavaria in particular is one of the risk areas for the transmission of TBE viruses via ticks. Early summer meningoencephalitis (TBE) is a disease of the meninges and the central nervous system that cannot be cured with medication.

Anyone who discovers a tick on themselves should immediately pull it out of the skin.

In addition to long clothing and sturdy shoes, this also includes anti-tick sprays. It also makes sense to check thoroughly for ticks after each visit to the countryside. You can protect yourself against TBE by getting vaccinated. There is no vaccination against Lyme disease for humans yet.

9 Euro Ticket

It is currently possible to purchase a 9€ ticket for the month of July and/or August at the German railway and local transport ticket offices.

With this ticket, you can use all local trains, buses and suburban trains throughout Germany.

Since an adult ticket from Munich to Wolfratshausen already costs 8,80€ or even 12,30€ to the campsite, the 9€ ticket might be worth it for your arrival and/or departure. Then you can also use this ticket to travel from the campsite to Bad Tölz or Munich.

Since children's tickets to Wolfratshausen are very cheap at 1.70€ and there are also group tickets for 5 people for around 20€, you have to work out whether you will use the ticket a second time within the month of July or August. Otherwise, group tickets are probably the cheaper alternative.



But if you want to visit Munich or other cities in Germany before or after the national camp, the 9€ ticket is certainly worth it for the respective month.

You can find more information at:

<https://www.bahn.com/en/offers/regional/9-euro-ticket-en>

You can book regional tickets on the MVV website or at the ticket office:

<https://www.mvv-muenchen.de/en/index.html>

Trash

You have to separate your trash already on your camp ground. In Germany we separate trash in these categories:

- yellow bag/ green point (not always green) → this is usually plastic, sheet metal, metal foil
- Paper
- Glass
- Residual waste (rest)
- bulky waste (big waste)
- hazardous waste (like batteries)

There will be garbage stations on the camp. your German partner groups will get the times in which you can bring your trash to the garbage stations on the camp.

Be respectful

We want everyone to treat each other with respect and to enjoy the camp.

This means for all participants...

- We respect the property of others (including flags).
- We respect all people and refrain from sexist and racist statements.
- We respect and are open to different customs, traditions and religions.
- We do not accept political jokes and hostility.

Those who do not abide by these rules may be expelled from the camp.

Camp rules

The camp rules for the Bundeslager are closely based on our scout rules. For a peaceful and safe coexistence, we all want to adhere to the following regulations:

"By participating in the Bundeslager, I acknowledge the camp rules, will behave accordingly and, if necessary, draw the attention of others to compliance with the rules."

I want to be helpful and considerate.

- I am quiet during the night rest periods (1:00 am - 7:00 am) and also observe this when singing. So anyone who wants to sleep can do so too.
- When I leave the campsite, I behave appropriately.

I want to respect others.

We want everyone to be able to move around the campsite safely:

- I only move a motorized vehicle on the site in exceptional cases and after consultation with the "Security" department and the camp management.
- I only use bicycles or comparable vehicles on the main routes.
- I do not use drones - this is prohibited. Exceptions must be requested in advance from the "Security" department and the camp management.
- Weapons and weapons-like objects are prohibited.
- I will not hurt anyone willingly - either through words or actions.



I want to take responsibility.

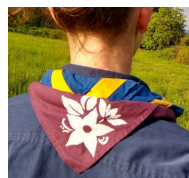
We want to set a good example. I pay particular attention to the Youth Protection Act when dealing with alcohol and cigarettes:

- I do not smoke in public at the campsite. Only at the designated places.
- I do not drink alcohol in public on the campsite. The serving and consumption of high-proof alcohol is prohibited on the campsite.
- I wear sturdy shoes (not flip flops) on the camp site to avoid accidents and injuries caused by tripping hazards, guy lines or pegs.
- I don't swim in the Isar (river near the camp site)- this is forbidden! There is a danger to life due to unpredictable currents! In addition, they and their banks are under nature protection.
- I do not take any animals to the Bundeslager - this is prohibited. Exceptions must be agreed in advance with the camp management.

I want to get to know nature and help to preserve it.

Large parts of the area are nature reserves:

- I take nothing from nature - with the exception of garbage.
- I do not use the forest, river, ponds and meadows as a toilet or to dispose of flushing water, rubbish, etc.
- I only enter designated paths and areas.



Save from harm on the BuLa ('intakt')

On the BuLa will be a so called 'team intakt' which wants to make sure that everybody can enjoy our camp save from harm.

All members of the BuLa-Team were trained beforehand so that they know what to do and where to go in case of experiencing or witnessing sexual assaults. All international team members (IST) will be trained on spot on the BuLa.

If you experience or witness any kind of sexual assaults you can find the team intakt and their tent on the market square close to the International Center. All members of the team intakt are wearing a purple scout scarf with a big white flower (see picture). You can also reach them under the following number: +491522 3579636 (also Whats App). Please give this information and number also to your participants.

Save from harm commitment for the Bundeslager 2022

Our goal as scouts is to accompany and support children and young people in their development into self-confident and happy people. For that it is important to offer all children and young people space in which they all feel comfortable, can try things out and grow. This also applies to their time at the BdP Bundeslager 2022. Therefore there shall not be any place for violence of any kind. All leaders shall agree to the following self commitment:

I am committed to ensuring that violations of personal boundaries, sexualised violence and sexual abuse do not take place at the federal camp "LebensTräume".

1. No place for violence

I know that being a Scout is incompatible with any form of physical, verbal, psychological and sexual violence. Any behavior that violates or disturbs respect for the other person and for one's own development is contrary to the principles here at the BdP Jamboree.

2. Be appreciative

I will be respectful to all people on the Jamboree, especially with children and young people. I respect their rights and their dignity. I also take her opinion seriously.



3. Rights of children and young people

I take the individual limits of children and young people seriously. I support their right to mental and physical integrity and their right to be helped.

4. Dealing with closeness and distance

I am careful with closeness and distance. I respect the personal boundaries and privacy of everyone at the federal camp. I also respect my own limits. This also applies to dealing with images and media.

5. Take a stand

I try to recognize any form of violations of personal boundaries and to take the necessary and appropriate steps. I take an active stand with words and deeds against any discriminatory, violent or sexist behavior. If people behave in a sexually abusive or violent way, I am committed to protecting the people concerned. I also intervene when those entrusted to me behave in a way that violates the boundaries of others. I know that I can also contact the intact team.

6. Position of trust and authority

I am aware that in my position I enjoy the special trust of the children and young people entrusted to me and that I have authority over them. I therefore act understandably and honestly. I do not exploit dependencies or the trust of others.

7. Knowledge of Consequences

I am aware that every violent statement or action and every sexualized action has consequences under association law and/or criminal law.

8. Support & Help

I know where I can go and who I can ask at the jamboree for the here mentioned reasons. I know about the intact team and how I can recognize them and where I can find the team on the camp. I know that I can come to the team with people effected.

If you have any further questions on the topic intact, please visit the homepage in the area: [AK intakt](#) (only German) or send us an e-mail directly to intact@pfadfinder.de.

Registration

You will find the registration desk in the glass house. When you arrive at the campsite, you will be given a list of participants and further information. Please have the list signed by your participants and bring the signed list back to the registration desk. There you will receive the participant wristbands.



Contact persons

Your contact persons at the camp are the so-called **ULBIs** (German shortform for sub-camp - commissioners - for internationals).

Each sub-camp has an ULBI - a contact person for you. If your ULBI is not able to help you or if you need help with travel bookings etc. then visit us at the International Center.

sub-camp	name	mailadress
BY	Günthher (Daniel Hofpointner)	daniel.hofpointner@pfadfinden.de
Over the (T)Rainbow	Tüddel (Florian Pfeffer)	flo27florian@gmail.com
BaWü	Therry (Theresa Kunz)	theresa@armerkonrad.de
Traum Welten		
RPS		
(T)RAUMSCHIFF		
Sachsen	Wiebke Spieß	wiebke@bdp-rps.de
Tzschabernack		
Hessen		
Bermuda Dreieck	Jana Schläfer	jana@schlaefer.net
NRW		
Asterix Vita	Anke Jatzen	
Somnium	Phillip	anke@stamm-oberon.de
NDS		
Masai Mara	Silas Delger	ul-international@nds.pfadfinden.de
SH/HH		
Unser Kiez	Bambi (Jannika Jakobi)	bambi@bdp-sh-hh.de
BBB		
Anders R(a)um	Adina Memmer	malmiko@web.de

Until the national camp, you can always reach us at bundeslager@pfadfinden.de.

We are very happy to see you soon at our BdP national camp.

Yours in guindig and scouting,

the international Team.